

Myanmar: Reform Policies, Area Studies, and Political Science

緬甸：改革政策、區域研究、以及政治科學

Dr. Leif-Eric Easley

Ewha Womans University and the Asan Institute for Policy Studies

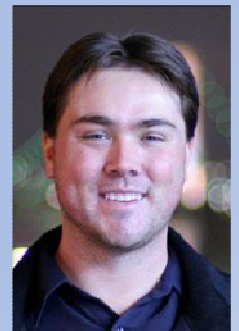


Wednesday August 24, 2016 at 4:30 PM

Building E21, Room G016 (FSS)

Myanmar's reform and opening is an important case of political transformation with implications for human security and economic development in Burma, regional trade and integration in Asia, and even geopolitics among great powers. The complexities surrounding Myanmar's reforms call for academic research that draws upon knowledge of history, culture and language offered by area specialists, as well as social science methodologies employed by political scientists. Such research will allow comparative politics and international relations to incorporate the Myanmar case into theoretical debates, add to a growing body of empirical work on East Asian politics, and perhaps help decision-makers manage a challenging and ongoing transition. **This lecture will report findings from a forthcoming article in *Pacific Affairs* by Jonathan T. Chow and Leif-Eric Easley – “Persuading Pariahs: Myanmar’s Strategic Decision for Reform and Opening”. Abstract available at: www.pacificaffairs.ubc.ca/forthcoming-issue.**

Leif-Eric Easley is Assistant Professor in the Division of International Studies at Ewha Womans University and a Research Fellow at the Asan Institute for Policy Studies in Seoul, Korea. His research interests include contested national identities and changing levels of trust in the bilateral security relationships of Northeast Asia. Dr. Easley was the Northeast Asian History Fellow at Stanford University's Shorenstein Asia-Pacific Research Center. He was also a visiting scholar at Yonsei University, the University of Southern California's Korean Studies Institute, the Japan Institute for International Affairs in Tokyo, and the East West Center in Honolulu. He holds a Ph.D. in Government from Harvard University.



澳門大學
UNIVERSIDADE DE MACAU
UNIVERSITY OF MACAU

**Sponsored by the Department of Government and
Public Administration, Faculty of Social Sciences**